





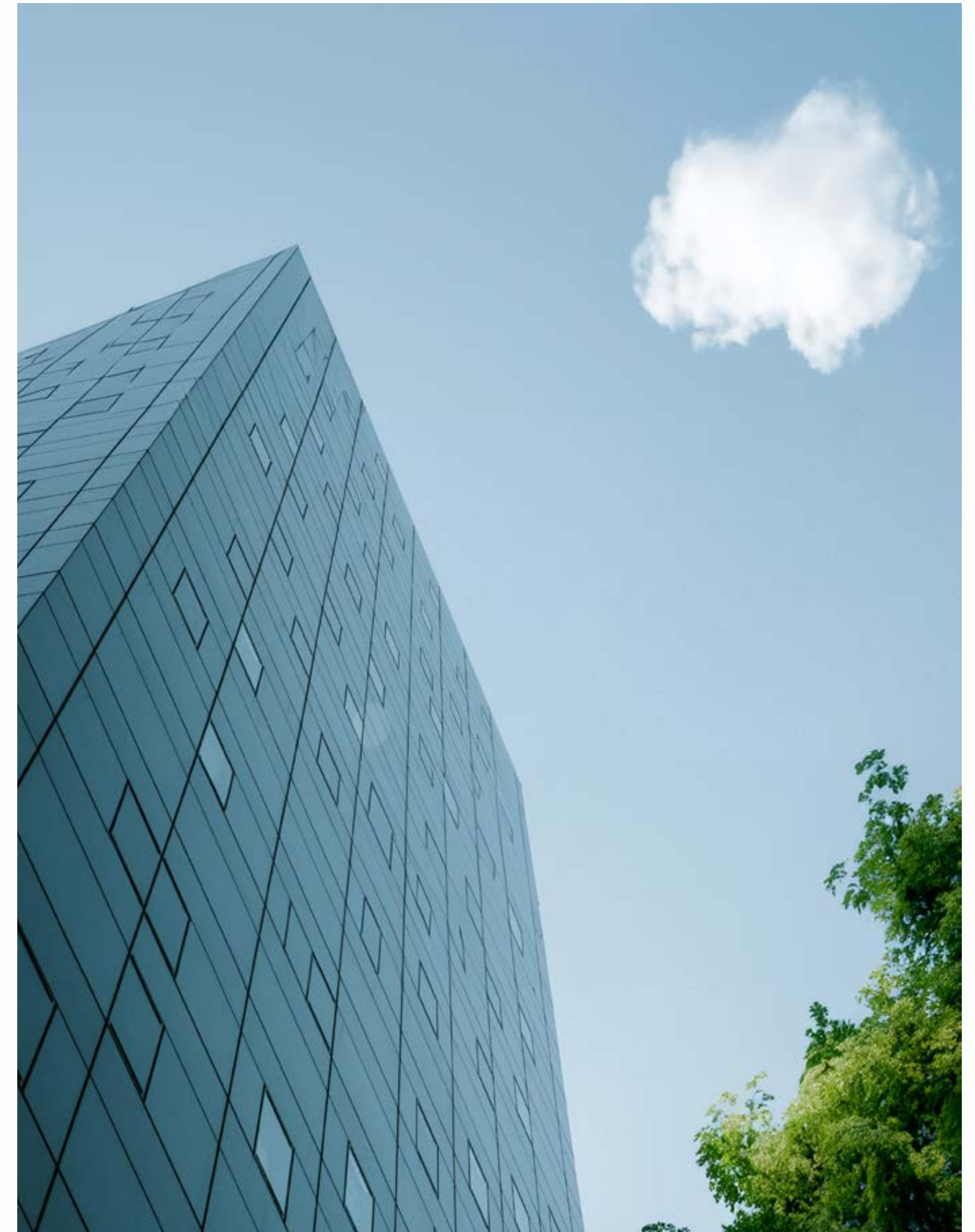
Way to grow.

ENNA group is one of the leading investors and one of the fastest-growing companies in Croatia. We strive to be a driver of knowledge, innovation, and development in the region, while directing our energy towards sectors that shape a sustainable future.

With a special emphasis on **RENEWABLE ENERGY SOURCES, LOGISTICS, AND FOOD**, our ambitions align with the needs and challenges of tomorrow.

At **ENNA group**, we are focused on creating solutions that lead the green transformation and provide lasting value for our partners and the community.

This strategy positions us as a leader in sustainable development. Our approach includes the integration of advanced technologies and sustainable practices that support our vision of progress and prosperity.



ENNA Group Management

Boštjan Napast CEO of **ENNA group**, is a proven expert with extensive managerial experience in the energy and logistics sectors.

Graduating in Mechanical Engineering from the Faculty of Engineering at the University of Maribor, he began his career in 1995 as a chief designer of engineering installations.

For over 10 years, Mr Napast worked for the Petrol Company, starting as a sales representative and advancing to the position of a board member in charge of energy, investment, technical development and quality.

He has successfully completed an extensive process of restructuring, digitalization and business process optimization in Petrol.

In 2011, Mr Napast took over the leading position in the Geoplin Company, transforming a local company into a successful and large regional company over a period of ten years.

In late 2021, Mr Napast was appointed president of the management board of Luka Koper. During his the port in Koper had record business results despite the economy crises caused by the pandemics and then by the war in Ukraine.

In July 2023, Mr Napast took the position of CEO of **ENNA group**.



Structure of ENNA Group



Energy

Food

Logistics



Naturala

Luka Ploče

Moslavina voće

Rijeka Gateway

49% ENNA LOGIC
51% APM TERMINALS



Energy Division



*Turning energy
into value.*



ENNA Next

From households to large enterprises, ENNA Next offers unique and adaptable solutions that guarantee supply stability and rational costs

ENNA Next was founded in February 2021 under the name Enna Opskrba, with a mission to provide premium services in electricity and gas supply. The company offers innovative and energy-efficient solutions for the use of electricity, gas, and renewable energy sources, tailored to the

specific requirements and needs of each customer. **ENNA Next** stands out for its commitment to delivering high-quality services that enable optimal energy management and significant savings for its customers.



MANAGEMENT BOARD

Nenad Ukropina
Member of the Management Board

Tomislav Bunjevac
Member of the Management Board



28.000 kW

Solar power plants
with a total capacity
exceeding 28,000 kW
have been built

ENNA Solar

Renewable energy
projects development

ENNA Solar focuses on developing and investing in facilities that produce electricity from renewable sources, such as solar and wind power plants.



MANAGEMENT BOARD

**Zvonimir
Novak**
CEO



400 GWh

Amount of electricity
purchased from
renewable sources

ENNA Geo

Developing projects for the production of electricity from geothermal sources

Two geothermal power plant construction projects are currently active. At the Slatina 2 field, the construction of a geothermal power plant with a connection capacity of 20 MW is planned, while at the Babina Greda 1 field, a geothermal power plant with a connection capacity of 15 MW is in the works.

In August 2024, ENNA's company Geo Power Zagocha began work on the development well near Slatina, making the Zagocha Geothermal Power Plant project the most advanced geothermal project in Croatia. The investment value exceeds 140 million euros. Throughout 2023, the company Geo Power Babina Greda conducted

hydrodynamic measurements in the exploration area "Babina Greda 1." At the end of 2023, the exploitation field "Babina Greda 1" was confirmed, establishing geothermal water reserves and concluding the exploration phase of the field. Preparations for the development of the exploration well are expected in 2025.

MANAGEMENT BOARD

Ivana Ivančić
CEO





€240 million

Investment in the
utilization of geothermal
energy for electricity
production

ENNA Esco

Energy
efficiency
projects

ENNA Esco offers financing models for the construction of electric power production capacities according to the ESCO model, and manages projects through all phases of plant development, from construction to maintenance.



MANAGEMENT BOARD

**Zvonimir
Novak**
CEO

**Food
Division**



*Where
opportunities
grow.*



ENNA Fruit

Market supply, production organization, purchase, distribution, and processing of fruits and vegetables

Tvrtka **ENNA Fruit** was founded in 2020, with its primary activity being the organization of fruit and vegetable production through cooperative relationships, aiming to connect primary agricultural production with the market. The main focus is on purchasing domestic fruits and vegetables and increasing the presence of local products in the market.

ENNA Fruit has procurement centers in Donji Miholjac, Lozan, Opuzen, and Varaždin, along with a distribution and logistics center, as well as its headquarters in Dugo Selo. **ENNA Fruit** is the leading supplier of bananas and citrus fruits for the Croatian and regional markets, and in addition to Croatia, it operates companies in Bosnia and Herzegovina, Slovenia, and Serbia.

ENNA Fruit's customers include the largest retail chains in Croatia, and it also collaborates with chains in Slovenia, Bosnia and Herzegovina, Serbia, and Central European markets.

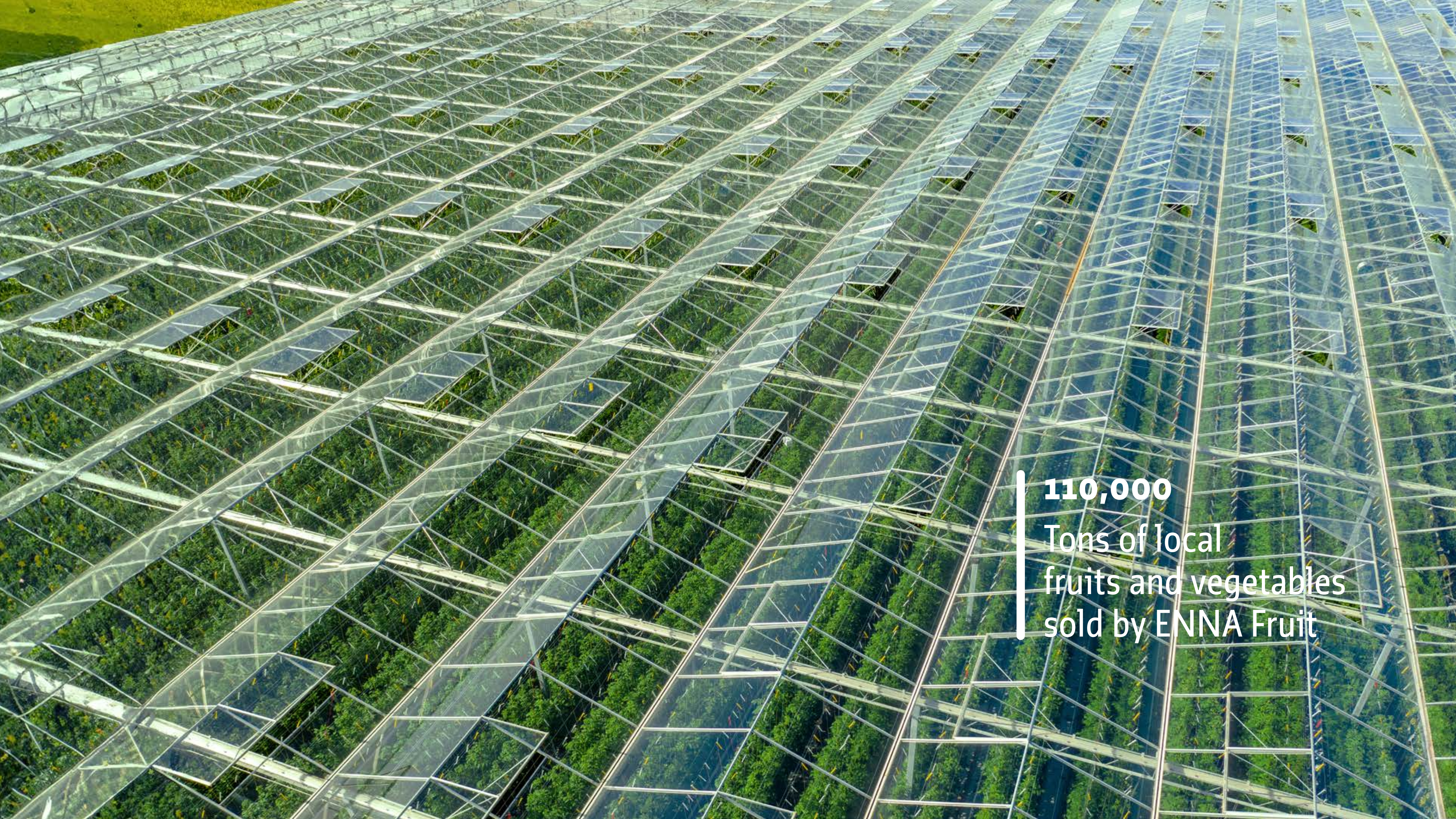
ENNA Fruit procures fruits and vegetables from more than 1,000 Croatian cooperatives.

MANAGEMENT BOARD

Sanja Burić
President of the Management Board

Tomislav Đurić
Member of the Management Board





110,000

Tons of local
fruits and vegetables
sold by ENNA Fruit

Logistics Division



A construction worker wearing a blue jumpsuit, a yellow hard hat, and safety glasses is shown in profile, pointing towards the right. The background features a clear blue sky, a green shipping container on the right, and a stack of blue materials in the lower center. The text "Bringing value, everywhere." is overlaid in white, italicized font on the right side of the image.

*Bringing value,
everywhere.*

ENNA Transport

The first privately-owned
Croatian railway
cargo company

The quality and reliability of our service are ensured through the use of the most modern locomotives on European railways, both electric and diesel. The company takes advantage of Croatia's favorable geographical position at the crossroads of important Pan-European transport routes.

ENNA Transport primarily operates in Croatia, Bosnia and Herzegovina, Serbia, Hungary, and Slovenia.

Our business partners are renowned companies, market leaders in the organization and management of goods transport. We manage transport operations 24 hours a day.

The company's goal is to further increase its market share in Croatia, expand into regional markets, and enhance excellence in freight transportation management.

MANAGEMENT BOARD

Gregor Glušič
President of the Management Board

Petar Glavaš
Member of the Management Board





ENNA Logic

A logistics company
founded in 2019

In partnership with the international company APM Terminals (part of the Maersk group), it founded **Rijeka Gateway**, a company that is developing and will manage a modern container terminal in Rijeka. The opening of the first phase of the terminal is expected in 2025, and once the second phase is completed, the terminal will have the capacity to handle more than one million twenty-foot equivalent units (TEU).

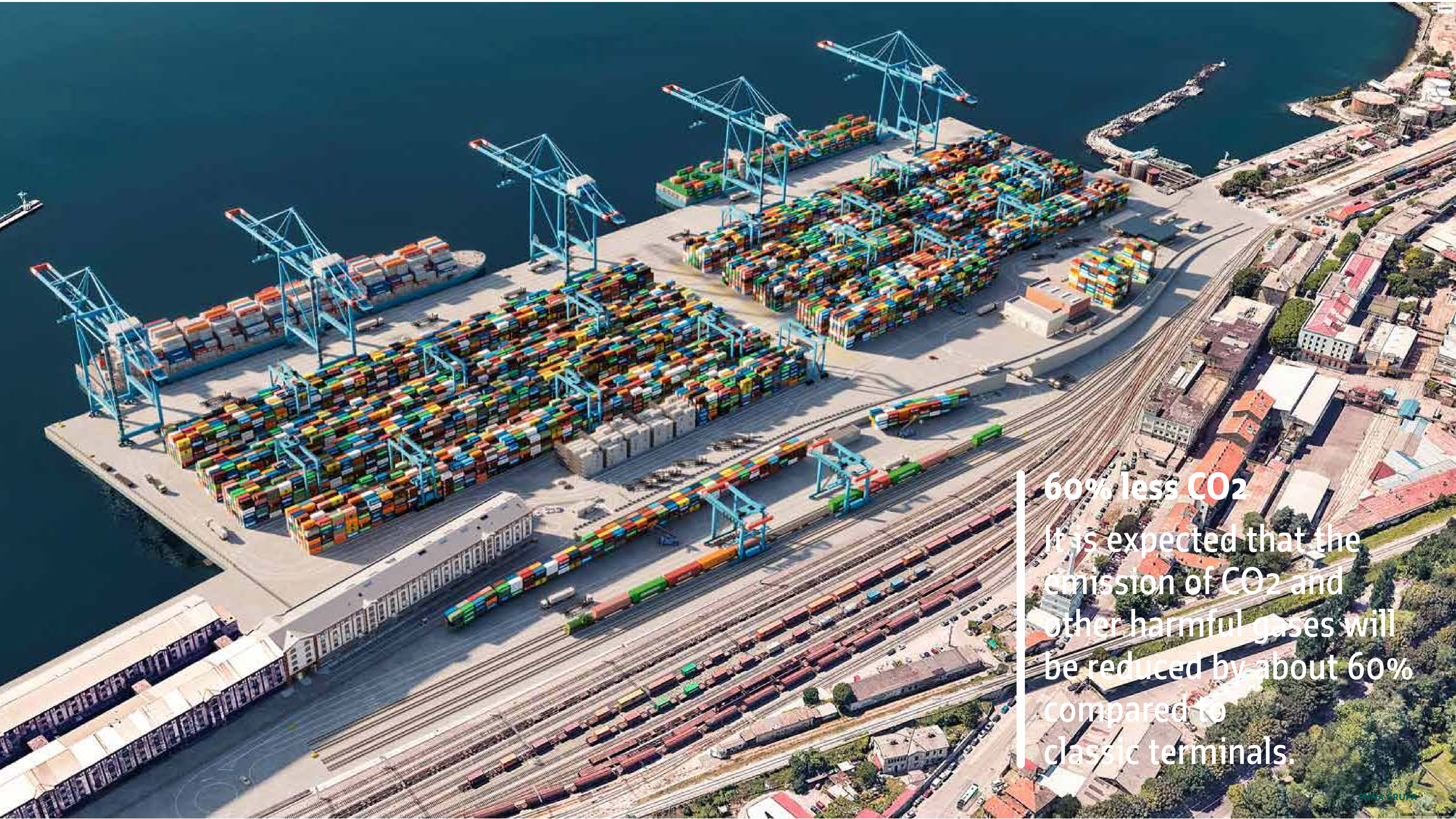
The Rijeka Gateway project will establish a logistics corridor from Rijeka, through Croatia, all the way to Eastern Europe, significantly shortening and speeding up the transport of goods, and permanently positioning Rijeka as an important point on the logistics map of Europe.



MANAGEMENT BOARD

Gregor Glušič
President
of the
Management
Board

Petar Glavaš
Member of the
Management
Board



60% less CO₂

It is expected that the emission of CO₂ and other harmful gases will be reduced by about 60% compared to classic terminals.

Luka Ploče

Most strategically important port for deep drawing ships in the central part of Adriatic

Excellent traffic connections and a favorable geostrategic position at the junction of important industrial routes makes it an inevitable link between the Adriatic, Mediterranean and Central Europe.

Luka Ploče d.d. is an all-purpose port suited for transportation of almost all types of cargo in international maritime shipping. Thanks to its favourable geostrategic position and continuous investments, the port of Ploče is included in the global list of ports capable of receiving CAPE SIZE vessels (up to 180 000 DWT).

The port of Ploče covers 230 hectares and has seven functional terminals, including container terminal and tanker terminal. The average volumes are over three million tons per year.

Today, ENNA has 43,49% ownership of Luka Ploče d.d.

MANAGEMENT BOARD

Hrvoje Livaja
President of the Management Board

Daniela Marelić
Member of the Management Board

ENNA group headquarters
Vukovar

+385 (0)32 450 970
+385 (0)32 450 971
info@enna.hr

Energia naturalis d.o.o.
Gospodarska zona Vukovar 13,
32000 Vukovar, Croatia

ENNA group main office
Zagreb

+385 (1) 5520 452
+385 (1) 5533 944
info@enna.hr

Energia naturalis d.o.o.
Strojarska cesta 20/21,
10000 Zagreb, Croatia



enna